

AddPac Time Attendance IP Video Door Phone AP-TAS300



AP-TAS300 enterprise Time Attendance SIP video door phone is a visitor access control unit through internet connection with built-in time & attendance function. It uses the SIP standard VoIP signal process feature, providing an excellent scalability by interworking with video phone, and soft phone. It also supports the latest audio/video codec at the optimum level. AP-TAS300 provides enterprise IP video visitor access control solution. AP-TAS300 Time Attendance IP video door phone is a device to open and close the door after verifying the identity of visitor. It is embedded with alarm, relay output port, and RS485 interface function to control the door remotely by interworking with automatic door. Also, it offers RF card, fingerprint verification technology for easier access of employees. AP-TAS300 supports both video door phone management/application service and SIP based video door phone function. Video door phone management function provides user management function, group management function, setup management function, RF card register and manages, fingerprint verification register and manage, and access log function and allow to extend the application service

service such as attendance/absence. Login Control, Daily Attendance Rules, Monthly Attendance Rules, Business Trip and Vacation, Report for Admin are main functions for AP-TAS300 time & attendance service. AP-TAS300 IP video door phone is combination of signaling technology/voice processing technology, and the-state-of-the-art video processing technology. AP-TAS300 provides 64Kbps~1Mbps level of network so that user may use anywhere with internet connection. Especially, it applies high end "Error Resilience" technology to cope with various packet errors and "Rate Control" to secure optimum level of resolution/frame rate in limited bandwidth environments. It also supports MPEG4 along with H.264 video codec. AP-TAS300 IP video door phone supports visitor access feature through video image. Also, this device supports Fingerprint Recognition, RF card access and password access feature for the convenience of employees. AP-TAS300 RISC CPU and DSP are all programmable structure so that user may use the latest features without much effort by simply setting an auto upgrade option or download from the homepage. AP-TAS300 is embedded with Smart Web Manager for easy control of video door phone. User may setup/manage IP video door phone through PC, smart phone, and tablet device. AddPac VoIP products are well recognized in terms of performance and stability throughout the world. With our accumulated experience in enterprise market and communication market, AP-TAS300 will satisfy the needs of customer along with AddPac IP telephony solution.

Major Feature

Overall Features

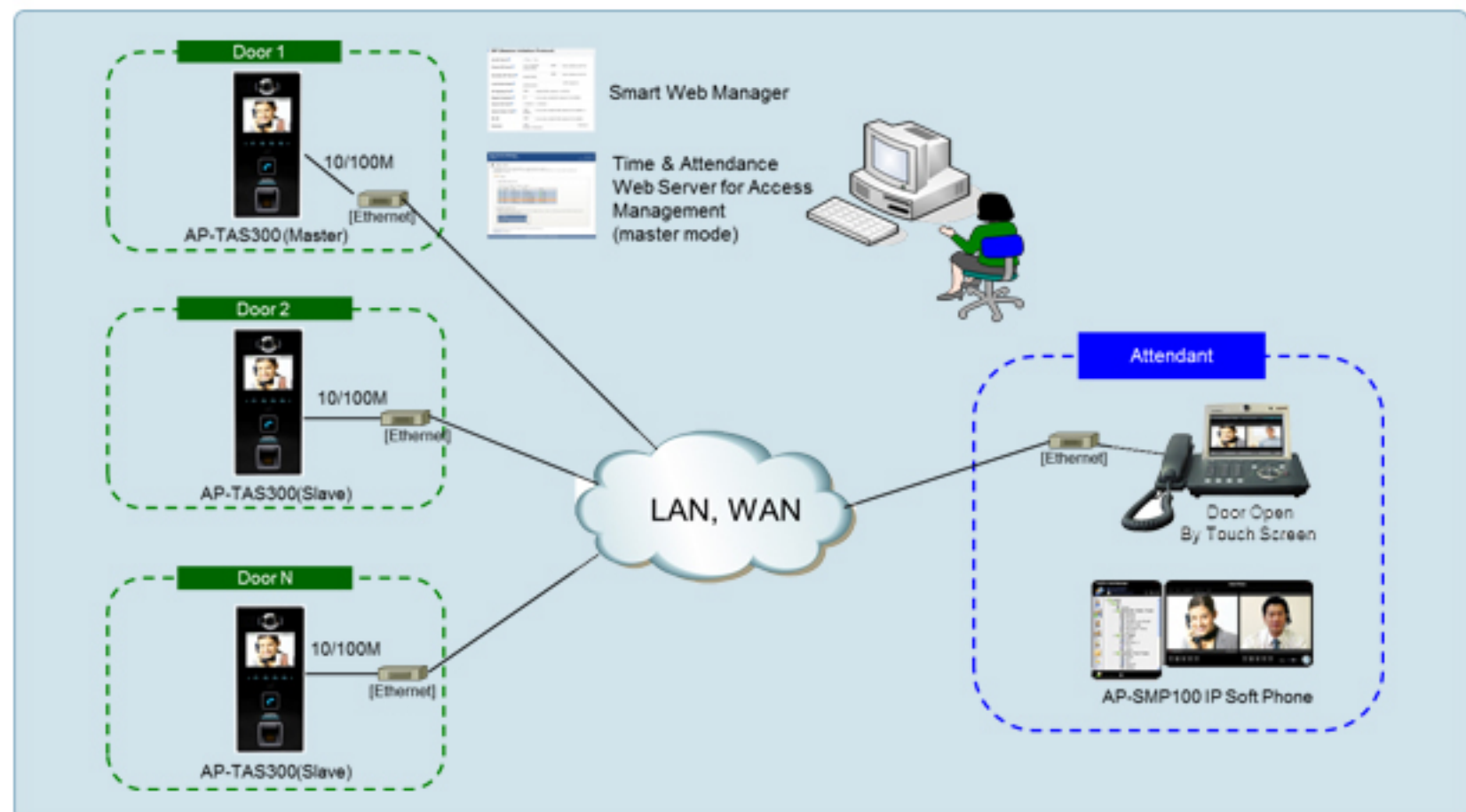
- > Fingerprint Recognition IP Video Door Phone Solution
- > Support various IP-PBX, video phone
- > Support rate control to secure the optimum level of resolution and frame rate
- > Apply high end error resilience to cope with various packet errors in network
- > Support 3.5inch TFT color LCD
- > High Performance Programmable DSP
- > SIP/H.323 dual stack
- > Flash memory 512Mbyte, SDRAM 128Mbyte
- > Support speaker phone
- > Support back light
- > Support access control with Fingerprint, RF card and password
- > Network interface: 10/100Mbps fast Ethernet interface x 1
- > Support RS232/RS422/RS485 interface, alarm input, relay output port
- > Support PoE
- > Supporting codec: MPEG-4, H.264
- > Support rate control for high resolution and frame rate
- > Apply high end error resilience to cope with various packet errors
- > Video Call Button
- > G.726, G.711, Voice Codec
- > SIP/H.323 Dual Stack



Time Attendance SIP Door Phone Comparison Table

Model	AP-TAS300 	AP-TAS200 
Service Features		
Time & Attendance	Support	Support
SIP Door Phone	SIP Video Door Phone	SIP Voice Door Phone
Duplex (Voice)	Full Duplex	Full Duplex
Key Pad	One(1) Call Button	One(1) Call Button
LCD	3.5 inch LCD	3.5 inch LCD
RF Card	Support	Support
Fingerprint	Support	Support
Camera Sensor	SD(VGA)	N/A
Video Codec	SD, H.264/MPEG4	N/A
Voice Codec	G.711, G.722(option)	G.711, G.722(option)
Signaling	SIP	SIP
MIC & Speaker Phone	Support	Support
LAN Port	1	1
PoE(Optional)	Support	Support

Network Diagram



AddPac Technology Co., Ltd.

AddPac Technology (Korea-Head Office)
 Phone +8225683848
 Email sales@addpac.com